

SES ASTRA - NEUBAU SERVICE BUSINESS CENTER  
BETZDORF, LUXEMBURG, 2010-2012



# SES ASTRA - NEUBAU SERVICE BUSINESS CENTER BETZDORF, LUXEMBURG, 2010-2012



The new building of the SES Service Business Center in Betzdorf is located on the SES Campus 'Pierre-Werner' oriented at the north-south-axis of the traffic-calmed alley facing existing and originating space borders. A clear form as contrast to the environmental space and the dialog between building and landscape combined with a sophisticated energetic building concept shall be a landmark for future development on this field.

The buildable plane of 36 x 36 m on the site is only used completely on the ground added by two upper floors on the northern half of the property resulting in a compact volume. The rest of the open space is used to enhance the green areas, that's why the flat roofs are intensive greened. The fronts of the building consist of floor-high colored metal panels shifting with same sized glass panels, a modular system that continues with the interior accessories like balustrades, cupboard- and archive-systems. The main development of the building

is situated in the east of the building. Optimized roomheights and -depths, variable dividing walls and minimal count of pillars maximize the flexibility of the groundplan for office usage. Half-public and general functions like cafeteria, conference area, lobby and development are taken over by the ground floor.

The energy concept is focused on the optimal balancing between thermal insulation, glazing, solar protection and thermal mass for enablement of a highly comfortable indoor climate in a mostly self-regulated, passive and energetic optimized building next to moderate minimizing of the operating costs.

The walls of the business center are constructed with prefabricated multi-layered wood-elements with a woodfiber insulation of 30 cm, three-pane windows and insulated balustrades. Massive ceilings and PCM-panels give a constructive mass for activation as thermal memory so the tempering of the building can be done with a notably minor effort of energy.

Client  
SES ASTRA REAL ESTATE S.A.  
Château de Betzdorf

Architect  
Pohl Architects  
with STD M Architects

Planning and Construction Process  
2009 – 2012

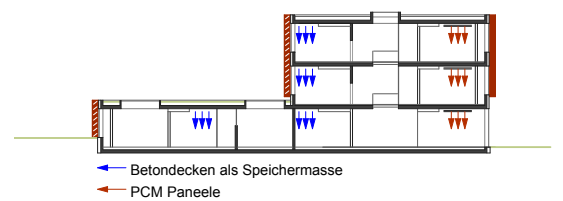
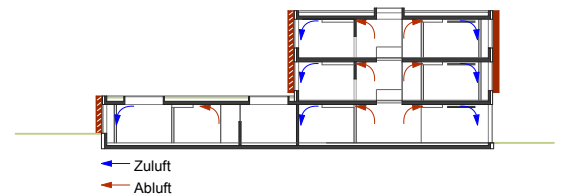
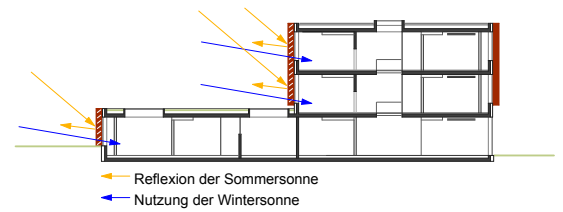
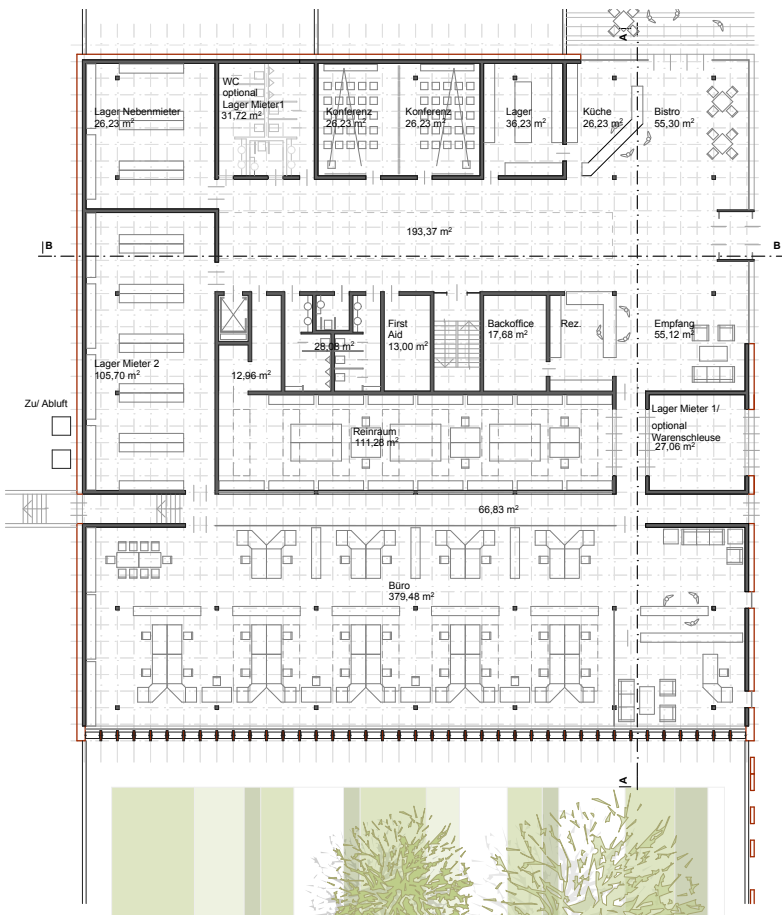
GFA  
4.200 m<sup>2</sup> / 45,200 sq.ft.

Address  
SBC Campus „Pierre Werner“  
L-6815 Betzdorf, Luxembourg

Prizes  
Competition, 1st prize

**P O H L   A R C H I T E K T E N**

# SES ASTRA - NEUBAU SERVICE BUSINESS CENTER BETZDORF, LUXEMBURG, 2010-2012





SES ASTRA - NEUBAU SERVICE BUSINESS CENTER  
BETZDORF, LUXEMBURG, 2010-2012

